



demolished the entire structure in 1903. The City began construction on the Broadway building into a Hall of Records in 1824 and so-called criminals. The City refurbished the where authorities began to incarcerate the nicknme as "the debtor's prison." In 1773, its growing use for "debtors" inspired its name.

The New Gaol was the first Dutch structure specifically built to jail people, mostly individuals for prisoners-of-war during the French and referred to as "debtors" and "paupers" and convicted of debt and poverty (who were

Surrogates Courthouse, south of Chambers Street and east

11 The New Gaol [1759-1903 [Red]

and Lenape, and renamed the land New York. In 1647, the English invaded the Dutch homes to provide relief to the destitute and reform its operations. As a form of institutionalized care, "non-deserving poor," who were taxed to support the Department of Housing, and other federal Investigation, Social Security Administration, and Human Services, Federal Bureau of Homeland Security, Department of Health and Human Services, Federal Bureau of Investigation, Social Security Administration, and other federal building that houses the Department of Justice. The Jacob K. Javits Building is a 41-story commercial trade in and out of NYC during the 1950s as part of a larger complex in lower Manhattan that included an eight-story court building. Maintainers have been named Richard Serra and the original police repression free drinks to patrons following the original after government workers complained it blocked views and made them feel "unease," sparking a national debate about public art and government funding. Currently, the tenth floor is used as a detention center for President Donald Trump's second-term mass deportation campaign.

3 Southern Tip of AKA Manahatta [Red] Street / Wall

15 African Burial Ground [1630s-Present [Red, Orange]

16 26 Federal Plaza [1963-Present [Blue]

17 Blackwell's Island [1828-1936 [Red, Orange]

18 State Prison of the City of New York [1796-1828 [Orange]

19 Stonewall Inn [1843-Present [Yellow, Dark Blue]

26 Federal Plaza [1963-Present [Blue]

33 Potter's Field [1797-1825 [Red, Orange]

37 City House of Refuge [1825-1935 [Orange]

43 Bellevue Penitentiary [1798-Present [Orange, Yellow]

51 Wards Islands and Randall's and Wards Island [1835 and 1851-1933 [Red, Dark Green, Orange]

57 Minnahanouck / AKA: Tekenas / Tenkenas [Randaillis and Wards Island were two separate islands under the stewardship of the Mecanesegek Lenape up to 12,000 years ago. The land was stolen by the Dutch in the 17th century and brought under various private ownership, including Jonathan Randall and the Ward brothers. The City purchased Randall's Island in 1835 and Wards Island in 1851 and used both sites as "potter's fields" or burial grounds for impoverished, criminalized, and otherwise marginalized people.

Both islands housed various institutions and border control facilities as well as almshouses. The islands were connected in the early 1960s facilities, including a public park, the NYFD, and the Triborough Bridge and Tunnel Authority.

ABOLITIONIST MAP OF NYC: Manahatta and its Surrounding Waters

The Abolitionist Map of NYC is part of the Abolitionist Guide to NYC, a project from Interrupting Criminalization. The Guide is funded by a grant from the Mellon Foundation. 2026.

10th and Greenwich Streets [1828 [Orange]

15 African Burial Ground [1630s-Present [Red, Orange]

16 26 Federal Plaza [1963-Present [Blue]

17 Blackwell's Island [1828-1936 [Red, Orange]

18 State Prison of the City of New York [1796-1828 [Orange]

19 Stonewall Inn [1843-Present [Yellow, Dark Blue]

26 Federal Plaza [1963-Present [Blue]

33 Potter's Field [1797-1825 [Red, Orange]

37 City House of Refuge [1825-1935 [Orange]

43 Bellevue Penitentiary [1798-Present [Orange, Yellow]

51 Wards Islands and Randall's and Wards Island [1835 and 1851-1933 [Red, Dark Green, Orange]

57 Minnahanouck / AKA: Tekenas / Tenkenas [Randaillis and Wards Island were two separate islands under the stewardship of the Mecanesegek Lenape up to 12,000 years ago. The land was stolen by the Dutch in the 17th century and brought under various private ownership, including Jonathan Randall and the Ward brothers. The City purchased Randall's Island in 1835 and Wards Island in 1851 and used both sites as "potter's fields" or burial grounds for impoverished, criminalized, and otherwise marginalized people.

Both islands housed various institutions and border control facilities as well as almshouses. The islands were connected in the early 1960s facilities, including a public park, the NYFD, and the Triborough Bridge and Tunnel Authority.

The City purchased Bellevue Farm, located along the East River shore south of 28th Street, in 1798. The farm had previously been used to quarantine sick people during multiple yellow fever outbreaks, forcing the addition of a hospital for contagious diseases in 1819. The original complex comprised two hospitals, an almshouse, a workshop, and a school, and children were forced to perform labor and received rigorous evangelical religious instruction. Although the reformatory provided a false image of a virtuous, philanthropic, and safe space for troubled youth, the reality of excessive corporal punishment, violent abuse, and indentured servitude was eventually exposed. By 1824, the hospital was formally named Bellevue, and prisoners were transferred from the almshouse to Blackwell's Island west of the East River. The reformatory building currently stands. The reformatory was incorporated into the Flatiron Building in 1928. The Society purchased an old federal lot for the Flatiron Building in 1812, north of where the Flatiron Building currently stands. The reformatory was incorporated into the Flatiron Building in 1928. The Society purchased an old federal lot for the Flatiron Building in 1812, north of where the Flatiron Building currently stands. The reformatory was incorporated into the Flatiron Building in 1928.

The New York City House of Refuge was the first juvenile reformatory in the United States, organized, and directed by the State of New York. The Society purchased an old federal lot for the Flatiron Building in 1812, north of where the Flatiron Building currently stands. The reformatory was incorporated into the Flatiron Building in 1928.

The New York City House of Refuge was the first juvenile reformatory in the United States, organized, and directed by the State of New York. The Society purchased an old federal lot for the Flatiron Building in 1812, north of where the Flatiron Building currently stands. The reformatory was incorporated into the Flatiron Building in 1928.

The New York City House of Refuge was the first juvenile reformatory in the United States, organized, and directed by the State of New York. The Society purchased an old federal lot for the Flatiron Building in 1812, north of where the Flatiron Building currently stands. The reformatory was incorporated into the Flatiron Building in 1928.

10th and Greenwich Streets [1828 [Orange]

15 African Burial Ground [1630s-Present [Red, Orange]

16 26 Federal Plaza [1963-Present [Blue]

17 Blackwell's Island [1828-1936 [Red, Orange]

18 State Prison of the City of New York [1796-1828 [Orange]

19 Stonewall Inn [1843-Present [Yellow, Dark Blue]

26 Federal Plaza [1963-Present [Blue]

33 Potter's Field [1797-1825 [Red, Orange]

37 City House of Refuge [1825-1935 [Orange]

43 Bellevue Penitentiary [1798-Present [Orange, Yellow]

51 Wards Islands and Randall's and Wards Island [1835 and 1851-1933 [Red, Dark Green, Orange]

57 Minnahanouck / AKA: Tekenas / Tenkenas [Randaillis and Wards Island were two separate islands under the stewardship of the Mecanesegek Lenape up to 12,000 years ago. The land was stolen by the Dutch in the 17th century and brought under various private ownership, including Jonathan Randall and the Ward brothers. The City purchased Randall's Island in 1835 and Wards Island in 1851 and used both sites as "potter's fields" or burial grounds for impoverished, criminalized, and otherwise marginalized people.

Both islands housed various institutions and border control facilities as well as almshouses. The islands were connected in the early 1960s facilities, including a public park, the NYFD, and the Triborough Bridge and Tunnel Authority.

The City purchased Bellevue Farm, located along the East River shore south of 28th Street, in 1798. The farm had previously been used to quarantine sick people during multiple yellow fever outbreaks, forcing the addition of a hospital for contagious diseases in 1819. The original complex comprised two hospitals, an almshouse, a workshop, and a school, and children were forced to perform labor and received rigorous evangelical religious instruction. Although the reformatory provided a false image of a virtuous, philanthropic, and safe space for troubled youth, the reality of excessive corporal punishment, violent abuse, and indentured servitude was eventually exposed. By 1824, the hospital was formally named Bellevue, and prisoners were transferred from the almshouse to Blackwell's Island west of the East River. The reformatory building currently stands. The reformatory was incorporated into the Flatiron Building in 1928.

The New York City House of Refuge was the first juvenile reformatory in the United States, organized, and directed by the State of New York. The Society purchased an old federal lot for the Flatiron Building in 1812, north of where the Flatiron Building currently stands. The reformatory was incorporated into the Flatiron Building in 1928.

The New York City House of Refuge was the first juvenile reformatory in the United States, organized, and directed by the State of New York. The Society purchased an old federal lot for the Flatiron Building in 1812, north of where the Flatiron Building currently stands. The reformatory was incorporated into the Flatiron Building in 1928.

The New York City House of Refuge was the first juvenile reformatory in the United States, organized, and directed by the State of New York. The Society purchased an old federal lot for the Flatiron Building in 1812, north of where the Flatiron Building currently stands. The reformatory was incorporated into the Flatiron Building in 1928.

10th and Greenwich Streets [1828 [Orange]

15 African Burial Ground [1630s-Present [Red, Orange]

16 26 Federal Plaza [1963-Present [Blue]

17 Blackwell's Island [1828-1936 [Red, Orange]

18 State Prison of the City of New York [1796-1828 [Orange]

19 Stonewall Inn [1843-Present [Yellow, Dark Blue]

26 Federal Plaza [1963-Present [Blue]

33 Potter's Field [1797-1825 [Red, Orange]

37 City House of Refuge [1825-1935 [Orange]

43 Bellevue Penitentiary [1798-Present [Orange, Yellow]

51 Wards Islands and Randall's and Wards Island [1835 and 1851-1933 [Red, Dark Green, Orange]

57 Minnahanouck / AKA: Tekenas / Tenkenas [Randaillis and Wards Island were two separate islands under the stewardship of the Mecanesegek Lenape up to 12,000 years ago. The land was stolen by the Dutch in the 17th century and brought under various private ownership, including Jonathan Randall and the Ward brothers. The City purchased Randall's Island in 1835 and Wards Island in 1851 and used both sites as "potter's fields" or burial grounds for impoverished, criminalized, and otherwise marginalized people.

Both islands housed various institutions and border control facilities as well as almshouses. The islands were connected in the early 1960s facilities, including a public park, the NYFD, and the Triborough Bridge and Tunnel Authority.

The City purchased Bellevue Farm, located along the East River shore south of 28th Street, in 1798. The farm had previously been used to quarantine sick people during multiple yellow fever outbreaks, forcing the addition of a hospital for contagious diseases in 1819. The original complex comprised two hospitals, an almshouse, a workshop, and a school, and children were forced to perform labor and received rigorous evangelical religious instruction. Although the reformatory provided a false image of a virtuous, philanthropic, and safe space for troubled youth, the reality of excessive corporal punishment, violent abuse, and indentured servitude was eventually exposed. By 1824, the hospital was formally named Bellevue, and prisoners were transferred from the almshouse to Blackwell's Island west of the East River. The reformatory building currently stands. The reformatory was incorporated into the Flatiron Building in 1928.

The New York City House of Refuge was the first juvenile reformatory in the United States, organized, and directed by the State of New York. The Society purchased an old federal lot for the Flatiron Building in 1812, north of where the Flatiron Building currently stands. The reformatory was incorporated into the Flatiron Building in 1928.

The New York City House of Refuge was the first juvenile reformatory in the United States, organized, and directed by the State of New York. The Society purchased an old federal lot for the Flatiron Building in 1812, north of where the Flatiron Building currently stands. The reformatory was incorporated into the Flatiron Building in 1928.

The New York City House of Refuge was the first juvenile reformatory in the United States, organized, and directed by the State of New York. The Society purchased an old federal lot for the Flatiron Building in 1812, north of where the Flatiron Building currently stands. The reformatory was incorporated into the Flatiron Building in 1928.

10th and Greenwich Streets [1828 [Orange]

15 African Burial Ground [1630s-Present [Red, Orange]

16 26 Federal Plaza [1963-Present [Blue]

17 Blackwell's Island [1828-1936 [Red, Orange]

18 State Prison of the City of New York [1796-1828 [Orange]

19 Stonewall Inn [1843-Present [Yellow, Dark Blue]

26 Federal Plaza [1963-Present [Blue]

33 Potter's Field [1797-1825 [Red, Orange]

37 City House of Refuge [1825-1935 [Orange]

43 Bellevue Penitentiary [1798-Present [Orange, Yellow]

51 Wards Islands and Randall's and Wards Island [1835 and 1851-1933 [Red, Dark Green, Orange]

57 Minnahanouck / AKA: Tekenas / Tenkenas [Randaillis and Wards Island were two separate islands under the stewardship of the Mecanesegek Lenape up to 12,000 years ago. The land was stolen by the Dutch in the 17th century and brought under various private ownership, including Jonathan Randall and the Ward brothers. The City purchased Randall's Island in 1835 and Wards Island in 1851 and used both sites as "potter's fields" or burial grounds for impoverished, criminalized, and otherwise marginalized people.

Both islands housed various institutions and border control facilities as well as almshouses. The islands were connected in the early 1960s facilities, including a public park, the NYFD, and the Triborough Bridge and Tunnel Authority.

The City purchased Bellevue Farm, located along the East River shore south of 28th Street, in 1798. The farm had previously been used to quarantine sick people during multiple yellow fever outbreaks, forcing the addition of a hospital for contagious diseases in 1819. The original complex comprised two hospitals, an almshouse, a workshop, and a school, and children were forced to perform labor and received rigorous evangelical religious instruction. Although the reformatory provided a false image of a virtuous, philanthropic, and safe space for troubled youth, the reality of excessive corporal punishment, violent abuse, and indentured servitude was eventually exposed. By 1824, the hospital was formally named Bellevue, and prisoners were transferred from the almshouse to Blackwell's Island west of the East River. The reformatory building currently stands. The reformatory was incorporated into the Flatiron Building in 1928.

The New York City House of Refuge was the first juvenile reformatory in the United States, organized, and directed by the State of New York. The Society purchased an old federal lot for the Flatiron Building in 1812, north of where the Flatiron Building currently stands. The reformatory was incorporated into the Flatiron Building in 1928.

The New York City House of Refuge was the first juvenile reformatory in the United States, organized, and directed by the State of New York. The Society purchased an old federal lot for the Flatiron Building in 1812, north of where the Flatiron Building currently stands. The reformatory was incorporated into the Flatiron Building in 1928.

The New York City House of Refuge was the first juvenile reformatory in the United States, organized, and directed by the State of New York. The Society purchased an old federal lot for the Flatiron Building in 1812, north of where the Flatiron Building currently stands. The reformatory was incorporated into the Flatiron Building in 1928.

10th and Greenwich Streets [1828 [Orange]

15 African Burial Ground [1630s-Present [Red, Orange]

16 26 Federal Plaza [1963-Present [Blue]

17 Blackwell's Island [1828-1936 [Red, Orange]

18 State Prison of the City of New York [1796-1828 [Orange]

19 Stonewall Inn [1843-Present [Yellow, Dark Blue]

26 Federal Plaza [1963-Present [Blue]

33 Potter's Field [1797-1825 [Red, Orange]

37 City House of Refuge [1825-1935 [Orange]

43 Bellevue Penitentiary [1798-Present [Orange, Yellow]

51 Wards Islands and Randall's and Wards Island [1835 and 1851-1933 [Red, Dark Green, Orange]

57 Minnahanouck / AKA: Tekenas / Tenkenas [Randaillis and Wards Island were two separate islands under the stewardship of the Mecanesegek Lenape up to 12,000 years ago. The land was stolen by the Dutch in the 17th century and brought under various private ownership, including Jonathan Randall and the Ward brothers. The City purchased Randall's Island in 1835 and Wards Island in 1851 and used both sites as "potter's fields" or burial grounds for impoverished, criminalized, and otherwise marginalized people.

Both islands housed various institutions and border control facilities as well as almshouses. The islands were connected in the early 1960s facilities, including a public park, the NYFD, and the Triborough Bridge and Tunnel Authority.

The City purchased Bellevue Farm, located along the East River shore south of 28th Street, in 1798. The farm had previously been used to quarantine sick people during multiple yellow fever outbreaks, forcing the addition of a hospital for contagious diseases in 1819. The original complex comprised two hospitals, an almshouse, a workshop, and a school, and children were forced to perform labor and received rigorous evangelical religious instruction. Although the reformatory provided a false image of a virtuous, philanthropic, and safe space for troubled youth, the reality of excessive corporal punishment, violent abuse, and indentured servitude was eventually exposed. By 1824, the hospital was formally named Bellevue, and prisoners were transferred from the almshouse to Blackwell's Island west of the East River. The reformatory building currently stands. The reformatory was incorporated into the Flatiron Building in 1928.

The New York City House of Refuge was the first juvenile reformatory in the United States, organized, and directed by the State of New York. The Society purchased an old federal lot for the Flatiron Building in 1812, north of where the Flatiron Building currently stands. The reformatory was incorporated into the Flatiron Building in 1928.

The New York City House of Refuge was the first juvenile reformatory in the United States, organized, and directed by the State of New York. The Society purchased an old federal lot for the Flatiron Building in 1812, north of where the Flatiron Building currently stands. The reformatory was incorporated into the Flatiron Building in 1928.

The New York City House of Refuge was the first juvenile reformatory in the United States, organized, and directed by the State of New York. The Society purchased an old federal lot for the Flatiron Building in 1812, north of where the Flatiron Building currently stands. The reformatory was incorporated into the Flatiron Building in 1928.

10th and Greenwich Streets [1828 [Orange]

15 African Burial Ground [1630s-Present [Red, Orange]

16 26 Federal Plaza [1963-Present [Blue]

17 Blackwell's Island [1828-1936 [Red, Orange]

18 State Prison of the City of New York [1796-1828 [Orange]

19 Stonewall Inn [1843-Present [Yellow, Dark Blue]

26 Federal Plaza [1963-Present [Blue]

33 Potter's Field [1797-1825 [Red, Orange]

37 City House of Refuge [1825-1935 [Orange]

43 Bellevue Penitentiary [1798-Present [Orange, Yellow]

51 Wards Islands and Randall's and Wards Island [1835 and 1851-1933 [Red, Dark Green, Orange]

57 Minnahanouck / AKA: Tekenas / Tenkenas [Randaillis and Wards Island were two separate islands under the stewardship of the Mecanesegek Lenape up to 12,000 years ago. The land was stolen by the Dutch in the 17th century and brought under various private ownership, including Jonathan Randall and the Ward brothers. The City purchased Randall's Island in 1835 and Wards Island in 1851 and used both sites as "potter's fields" or burial grounds for impoverished, criminalized, and otherwise marginalized people.

Both islands housed various institutions and border control facilities as well as almshouses. The islands were connected in the early 1960s facilities, including a public park, the NYFD, and the Triborough Bridge and Tunnel Authority.

The City purchased Bellevue Farm, located along the East River shore south of 28th Street, in 1798. The farm had previously been used to quarantine sick people during multiple yellow fever outbreaks, forcing the addition of a hospital for contagious diseases in 1819. The original complex comprised two hospitals, an almshouse, a workshop, and a school, and children were forced to perform labor and received rigorous evangelical religious instruction. Although the reformatory provided a false image of a virtuous, philanthropic, and safe space for troubled youth, the reality of excessive corporal punishment, violent abuse, and indentured servitude was eventually exposed. By 1824, the hospital was formally named Bellevue, and prisoners were transferred from the almshouse to Blackwell's Island west of the East River. The reformatory building currently stands. The reformatory was incorporated into the Flatiron Building in 1928.

The New York City House of Refuge was the first juvenile reformatory in the United States, organized, and directed by the State of New York. The Society purchased an old federal lot for the Flatiron Building in 1812, north of where the Flatiron Building currently stands. The reformatory was incorporated into the Flatiron Building in 1928.

The New York City House of Refuge was the first juvenile reformatory in the United States, organized, and directed by the State of New York. The Society purchased an old federal lot for the Flatiron Building in 1812, north of where the Flatiron Building currently stands. The reformatory was incorporated into the Flatiron Building in 1928.

The New York City House of Refuge was the first juvenile reformatory in the United States, organized, and directed by the State of New York. The Society purchased an old federal lot for the Flatiron Building in 1812, north of where the Flatiron Building currently stands. The reformatory was incorporated into the Flatiron Building in 1928.

TEMPLATE FOR LANDMARKS

[MAP #] [Landmark Name] [Start-End Date] [Chapter Colors]

Additional Names

Location (street address and/or current site)

Description (includes a paragraph of the history of the landmark with significant dates)

ABOLITIONIST MAP OF NYC MANHATTA AND ITS SURROUNDING WATERS

CHAPTER KEY

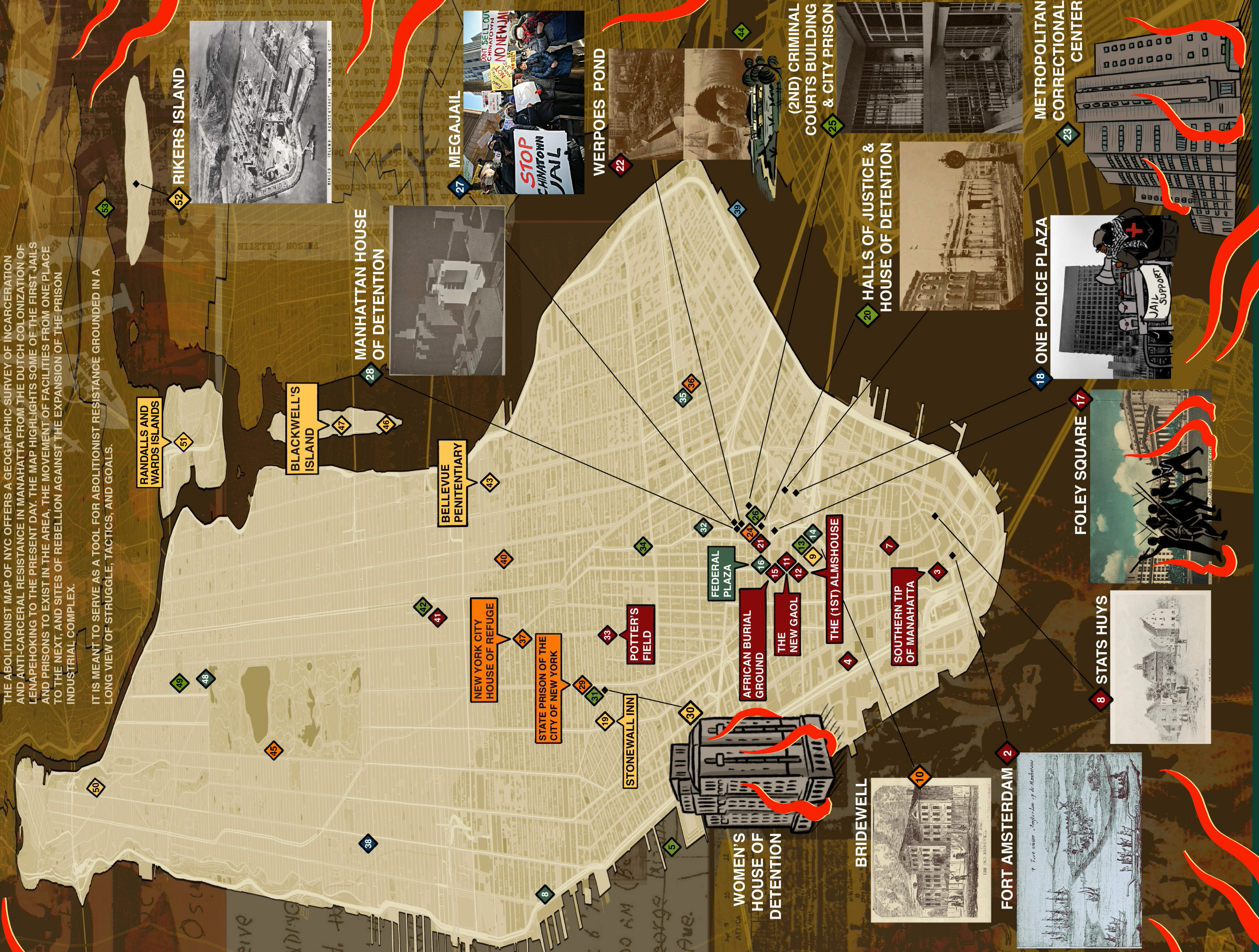
- ORIGINS
- DIFFERENCE, CLASSIFICATION, AND DIVISION
- BODIES AND CONTAGION
- ARCHITECTURE AND TECHNOLOGY
- DETENTION AND DIVERSION
- BEYOND BORDERS
- ABOLITION NOW

THE ABOLITIONIST MAP OF NYC OFFERS A GEOGRAPHIC SURVEY OF INCARCERATION AND ANTI-CARCERAL RESISTANCE IN MANHATTA FROM THE DUTCH COLONIZATION OF LENAPEKING TO THE PRESENT DAY. THE MAP HIGHLIGHTS SOME OF THE FIRST JAILS AND PRISONS TO EXIST IN THE AREA, THE MOVEMENT OF FACILITIES FROM ONE PLACE TO THE NEXT, AND SITES OF REBELLION AGAINST THE EXPANSION OF THE PRISON INDUSTRIAL COMPLEX.

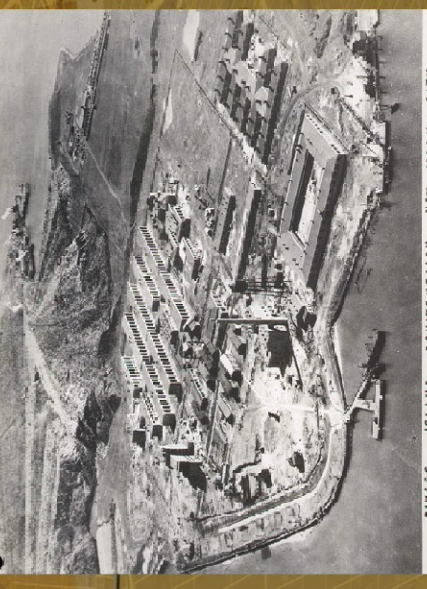
IT IS MEANT TO SERVE AS A TOOL FOR ABOLITIONIST RESISTANCE GROUNDED IN A LONG VIEW OF STRUGGLE, TACTICS, AND GOALS.

LOCATION KEY

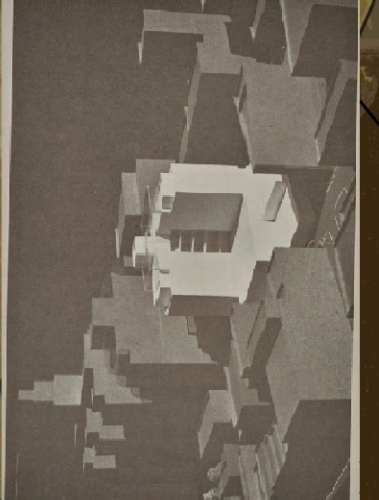
1. ELLIS ISLAND
2. FORT AMSTERDAM
3. SOUTHERN TIP OF MANAHATTA
4. WORLD TRADE CENTER
5. BIBBY VENTURE SHIP
6. STATS HUYS
7. (1ST) NEW YORK CITY HALL
8. BAYVIEW CORRECTIONAL FACILITY
9. ARMY BARRACKS
10. BRIDEWELL
11. THE NEW GAOL
12. (1ST) ALMHOUSE
13. TWEED COURTHOUSE
14. (2ND) ALMHOUSE
15. AFRICAN BURIAL GROUND
16. 26 FEDERAL PLAZA
17. FOLEY SQUARE
18. 1 POLICE PLAZA
19. STONEWALL INN
20. HALLS OF JUSTICE AND HOUSE OF DETENTION
21. FIVE POINTS / CHINATOWN
22. WERPOES POND
23. METROPOLITAN CORRECTIONAL CENTER
24. CENTER
25. (1ST) CITY PRISON
26. (2ND) CRIMINAL COURTS BUILDING AND CITY PRISON 26, (1ST) CRIMINAL COURTS / BRIDGE OF SIGHNS
27. MEGAJAIL
28. MANHATTAN HOUSE OF DETENTION
29. STATE PRISON OF THE CITY OF NEW YORK
30. WOMEN'S HOUSE OF DETENTION
31. JEFFERSON MARKET COURTHOUSE
32. FORMER NEW YORK CITY POLICE HEADQUARTERS
33. POTTER'S FIELD
34. METROPOLITAN POLICE
35. NEW YORK COUNTY JAIL
36. ESSEX MARKET
37. NEW YORK CITY POLICE COURT
38. HOUSE OF REFUGE
39. CUNY JOHN JAY COLLEGE OF CRIMINAL JUSTICE
39. BIBBY RESOLUTION SHIP
40. CHILDREN'S COURT
41. AMERICAN INDIAN COMMUNITY HOUSE
42. GRAND CENTRAL CAMPBELL HOME
43. BELLEVUE PENITENTIARY
44. WALLABOUT BAY (BRITISH PRISON SHIPS)
45. SENECA VILLAGE
46. NORTH BROTHER ISLAND / RIVERSIDE HOSPITAL
47. BLACKWELL'S ISLAND
48. LINCOLN CORRECTIONAL FACILITY
49. PARKSIDE CORRECTIONAL FACILITY
50. EDGECOMBE RESIDENTIAL TREATMENT FACILITY
51. RANDALLS AND WARDS ISLANDS
52. RIKERS ISLAND
53. HUNTS POINT "THE BOAT"
54. NEW YORK JUVENILE ASYLUM



52 RIKERS ISLAND



28 MANHATTAN HOUSE OF DETENTION



27 MEGAJAIL



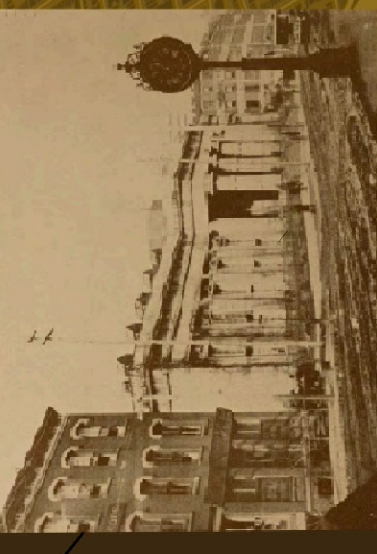
22 WERPOES POND



25 (2ND) CRIMINAL COURTS BUILDING & CITY PRISON



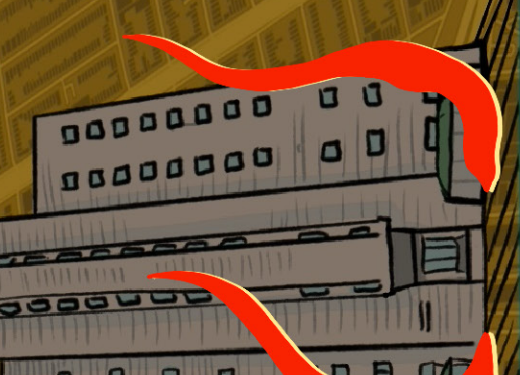
20 HALLS OF JUSTICE & HOUSE OF DETENTION



18 ONE POLICE PLAZA



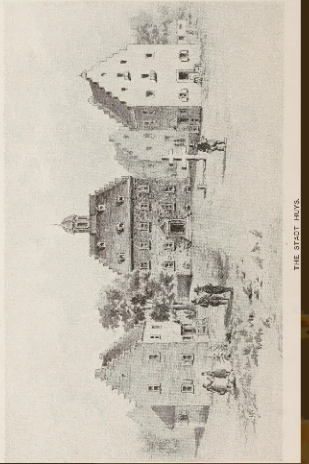
23 METROPOLITAN CORRECTIONAL CENTER



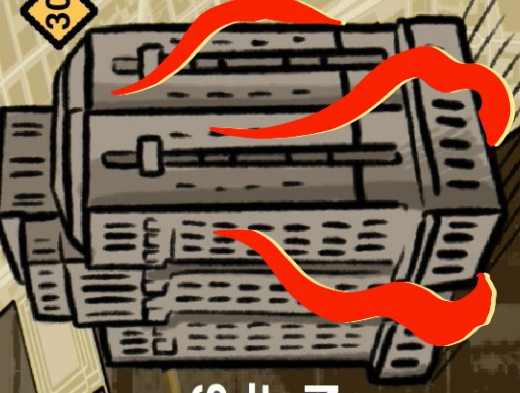
17 FOLEY SQUARE



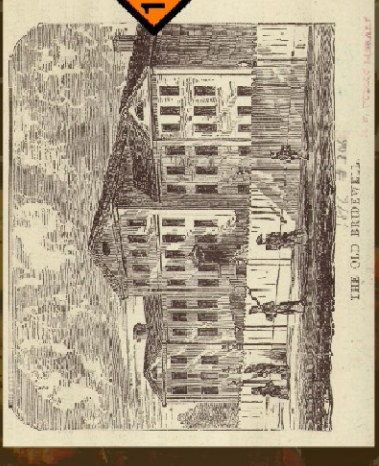
8 STATS HUYS



WOMEN'S HOUSE OF DETENTION



BRIDEWELL



FORT AMSTERDAM

